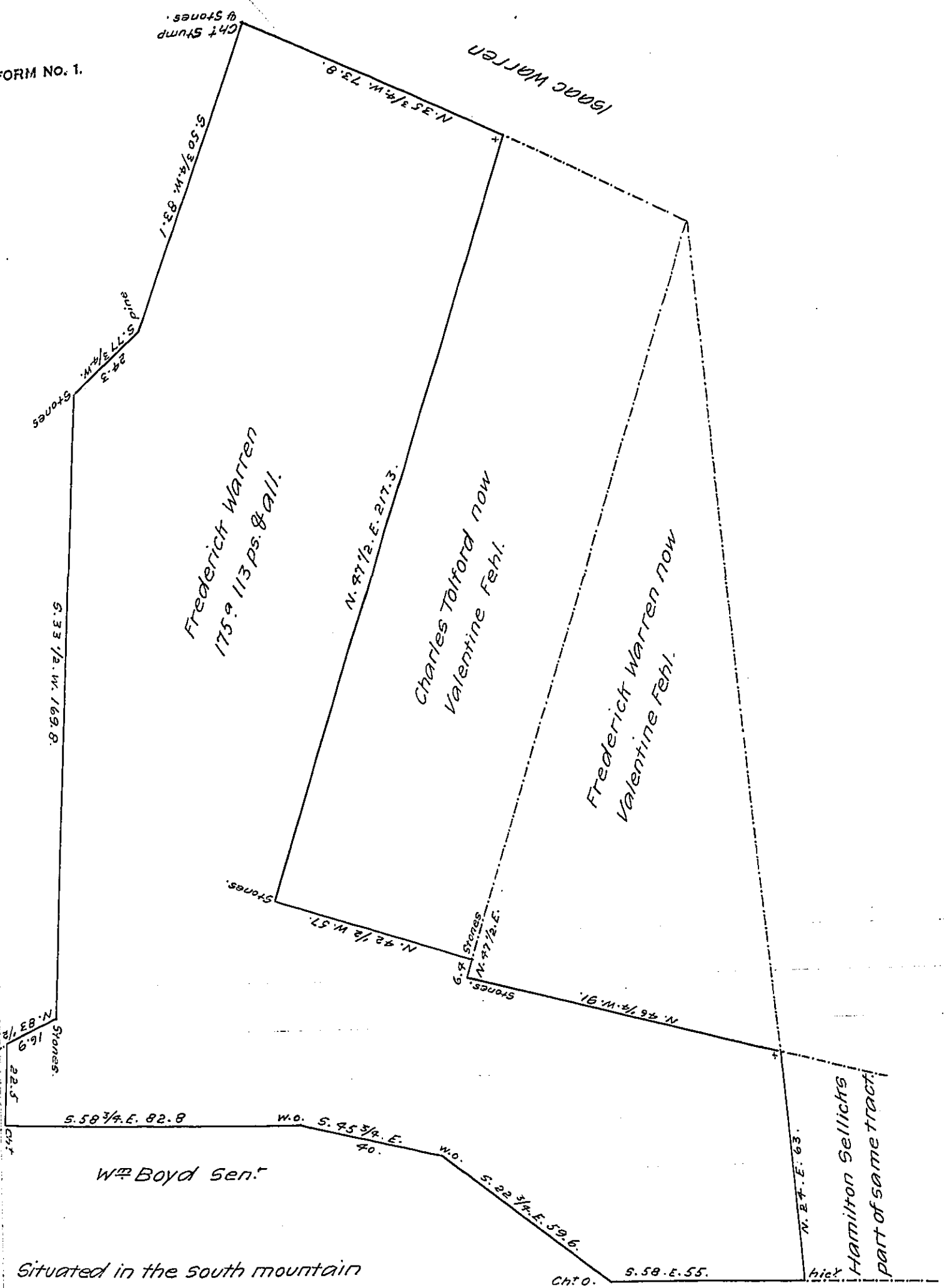


FORM NO. 1.

Piney Mountain



Situated in the south mountain  
 Manallen Township Adams County Being  
 part of a larger tract of 329<sup>a</sup> 136 ps. & all. Surveyed June 18<sup>th</sup> 1798 by Moses M<sup>r</sup> -  
 Clean. D.S. by warrant for 300<sup>a</sup> dated April 24<sup>th</sup> 1798 Divided from the residue  
 July 27<sup>th</sup> 1809. it is very rough & in some places ~~is~~ strong mineral attraction  
 Sam<sup>l</sup> Sloan. D.S.

To Andrew Porter Esq.  
 Surveyor General.

IN TESTIMONY that the above is a copy of the original remaining on file in  
 the Department of Internal Affairs of Pennsylvania, made  
 conformably to an Act of Assembly approved the 16th day of  
 February 1833, I have hereunto set my hand and caused  
 the Seal of said Department to be affixed at Harrisburg,  
 this sixteenth day of April 1907.

*Loach R. Brown*  
 Secretary of Internal Affairs.